



# BENCHES Street Furniture

**MODERN GARDENS FOR GARDENS EQUIPMENTS TRADING LLC**

PO Box 128619 Abu Dhabi UAE | Tel +971 2 650 8039 | Fax +971 2 673 5995

Email [moderngardens@gmail.com](mailto:moderngardens@gmail.com) | [marketing.moderngardens@gmail.com](mailto:marketing.moderngardens@gmail.com) | Website [moderngardensuae.com](http://moderngardensuae.com)





# | METAL BENCHES





**CETRA BENCH  
WITH BACKREST**



**KOPER BENCH  
WITH BACKREST**



**GARDA BENCH  
WITH BACKREST**



**CETRA BENCH  
WITHOUT BACKREST**

**MATERIALS | GALVANIZED STEEL / STAINLESS STEEL, POWER COATED**



**KOPER BENCH  
WITHOUT BACKREST**



**GARDA BENCH  
WITHOUT BACKREST**



**ATHENA BENCH  
WITH BACKREST**



**PIERO BENCH  
WITH BACKREST**



**REST BENCH  
WITH BACKREST**



**ATHENA BENCH  
WITHOUT BACKREST**



**PIERO BENCH  
WITHOUT BACKREST**



**REST BENCH  
WITHOUT BACKREST**

MATERIALS | GALVANIZED STEEL, POWER COATED AND HARDWOOD TIMBER





**BEST BENCH**



**AURORA BENCH  
WITH BACKREST**



**TAURI BENCH  
WITH BACKREST**



**SQUARE BENCH**



**AURORA BENCH  
WITHOUT BACKREST**



**TAURI BENCH  
WITHOUT BACKREST**

**MATERIALS | GALVANIZED AND POWDER COATED STEEL OR STAINLESS STEEL**



**AP. 5101**

DIMENSIONS | 400 x 1500 x 780mm



**AP. 5100**

DIMENSIONS | 350 x 1500 x 300mm



**AP. 5105**

DIMENSIONS | 1520 x 2050 x 710mm



**AP. 5103**

DIMENSIONS | 1500 x 1500 x 650mm



**AP. 5106**

DIMENSIONS | 2170 x 2050 x 710mm



**AP. 5102**

DIMENSIONS | 1800 x 1800 x 650mm

MATERIALS | METAL TYPE | STEEL PLATE / BOX PIPE    METAL PAINT | ELECTROSTATIC PAINT / PLASTISOL COATING

METAL BENCHES







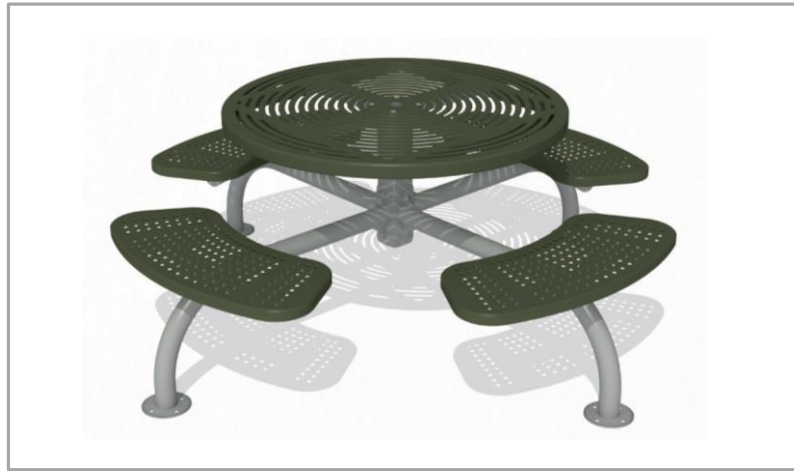
**AP. 5109**  
 DIMENSIONS | 2170 x 2050 x 710mm



**AP. 5072**  
 DIMENSIONS | 680 x 1520 x 870mm



**AP. 5074 WITH BACKREST**  
 DIMENSIONS | 470 x 1520 x 910mm



**AP. 5108**  
 DIMENSIONS | 2170 x 2050 x 710mm



**AP. 5073**  
 DIMENSIONS | 630 x 1390 x 880mm



**AP. 5074**  
 WITHOUT BACKREST

**MATERIALS | METAL TYPE | STAINLESS STEEL LASER CUTTING & PIPE PROFILE**

**WOOD TYPE | BENDED HPL METAL PAINT | POLISHING 304 STAINLESS STEEL**



**CIVIC BENCH**



**STAINLESS STEEL SETAED BENCH**

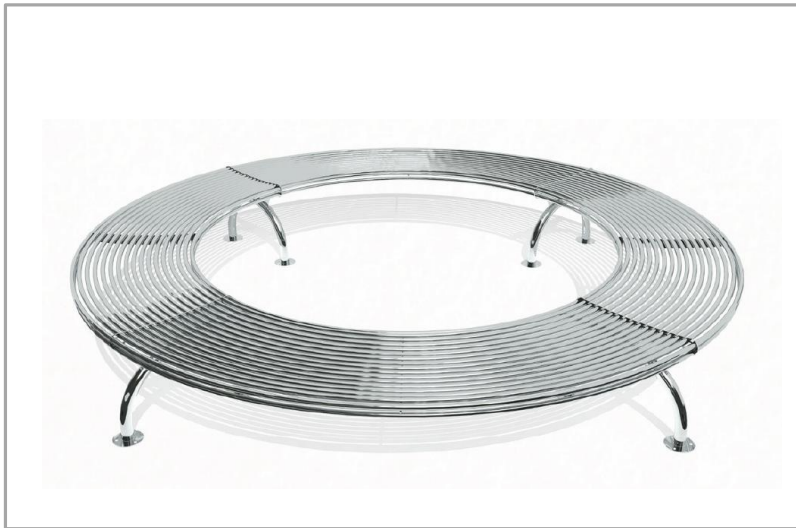


**STEEL-SLATTED BENCH**



**SPECIFICATIONS** | Mild Steel Frame, Aluminum Slats, Length 1800 mm / 2000 mm, Concealed Bolt Down Attachment / in-ground attachment, Powder Coat or Mill Finish





**AP. 5076**  
**DIMENSIONS | 660 x 2910 x 480mm**

**METAL TYPE | STAINLESS STEEL LASER CUTTING & PIPE PROFILE METAL TYPE | POLISHING 304 STAINLESS STEEL**

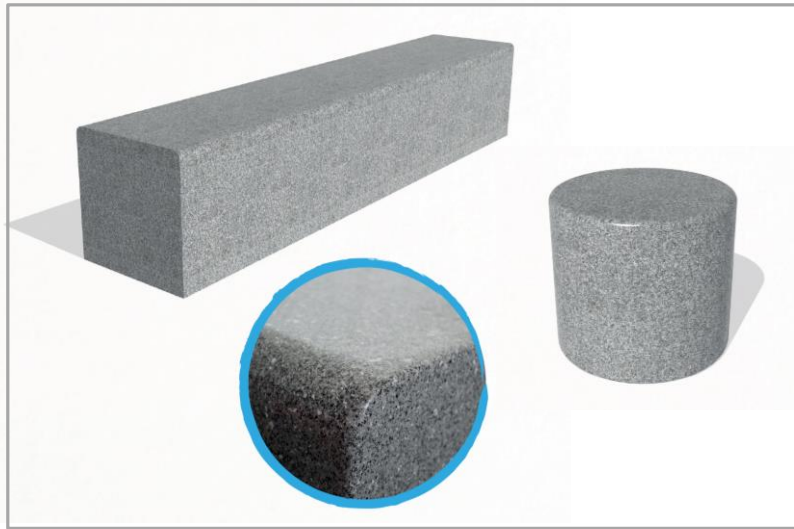


**ALTERNATIVE DESIGNS**



# | FIBER GLASS BENCHES



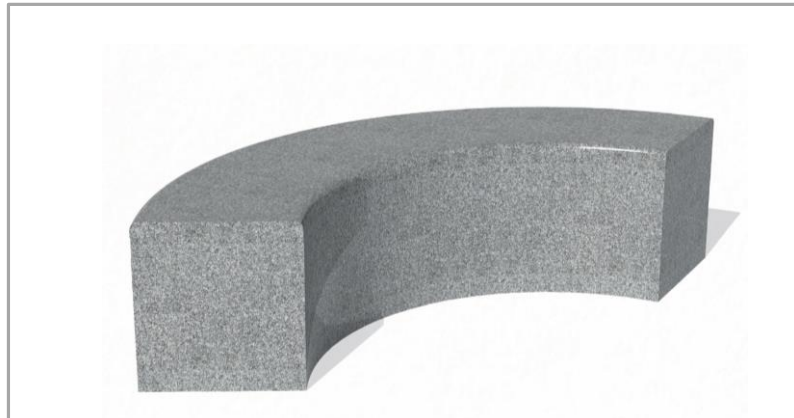


**AP. 5091**

**DIMENSIONS** | 2000 x 500 x 500mm

**AP. 5092**

**DIMENSIONS** | 500 x 500 x 500mm



**AP. 5090**

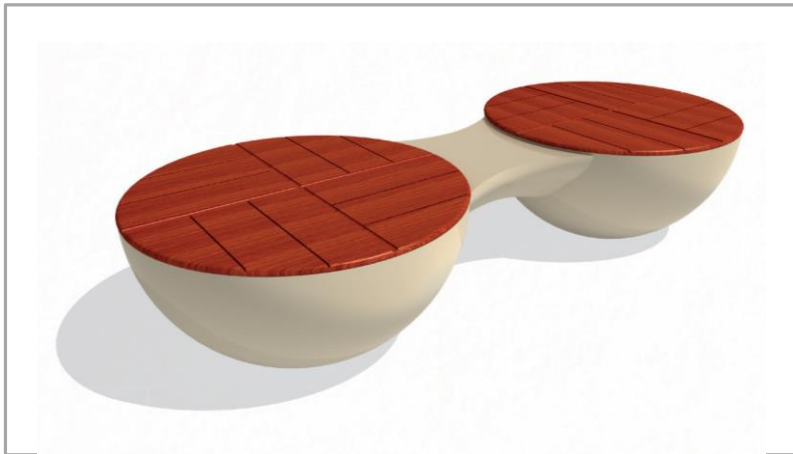
**DIMENSIONS** | 1710 x 660 x 500mm

**SPECIFICATIONS** | MATERIAL TYPE | **FIBERGLASS**

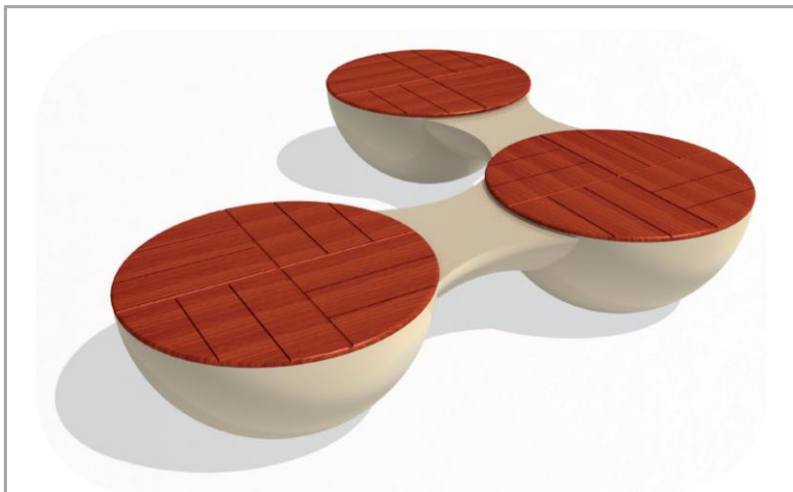
**PAINT TYPE** | **GRANITE LACQUER PAINT**



**ALTERNATIVE DESIGNS**



**AP. 5093**  
**DIMENSIONS | 2570 x 1120 x 500mm**



**AP. 5094**  
**DIMENSIONS | 2570 x 2570 x 500mm**

**SPECIFICATIONS | MATERIAL TYPE | FIBERGLASS PAINT TYPE | ACRYLIC PAINT**



**AP. 5095**  
**DIMENSIONS | 1120 x 1120 x 500mm**

**WOOD TYPE | IMPORTED SAPELE WOOD PAINTING METHOD | WOOD PROTECTIVE PAINT**



**ACTUAL**





# | WOODEN BENCHES



**PIREO WOOD BENCH  
WITH BACKREST**



**TAURI CLASSIC WOOD BENCH  
WITH BACKREST**



**TAURI WOOD BENCH  
WITH BACKREST**



**PIREO WOOD BENCH  
WITHOUT BACKREST**



**TAURI CLASSIC WOOD BENCH  
WITHOUT BACKREST**



**TAURI WOOD BENCH  
WITHOUT BACKREST**

**MATERIALS | GALVANIZED STEEL, POWER COATED AND HARDWOOD TIMBER**





**DRESDA BENCH**



**OSLO BENCH**



**RODA BENCH**



**LIPSIA BENCH**



**CRETA BENCH**



**RODA BENCH  
WITH EXOTIC WOOD**

**MATERIALS | GALVANIZED STEEL, POWER COATED AND HARDWOOD TIMBER**



**CIPRO BENCH  
WITH BACKREST**



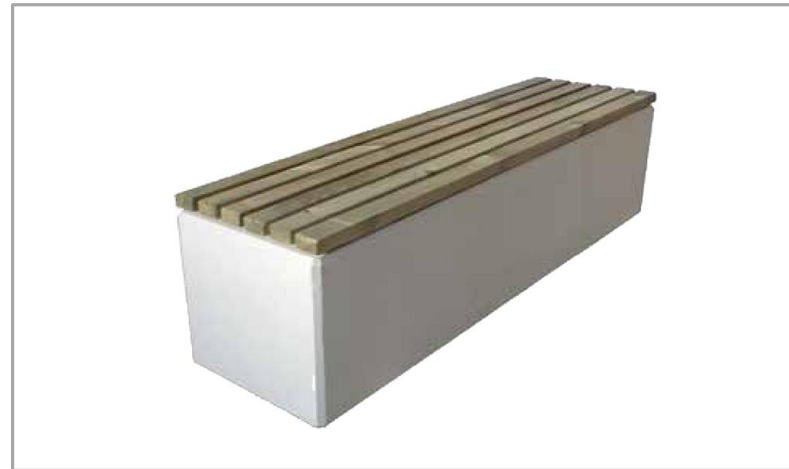
**CIPRO BENCH  
WITHOUT BACKREST**



**RIVIERA BENCH  
WITH BACKREST**



**LITHOS DOPPIA**



**LITHOS SEDUTA MOD.A**



**LITHOS SEDUTA MOD.B**

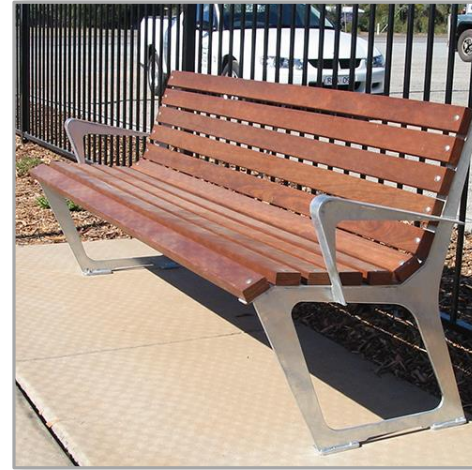
**MATERIALS | GALVANIZED STEEL, POWER COATED AND HARDWOOD TIMBER**





### CHAISE BENCH

**MATERIALS** | Available in Single & Double Configurations | Width: 600mm or 1200mm, Mild Steel Construction, Hot Dip Galvanised, Hardwood Timber Slats, Bolt Down Attachment, Powder Coat Finish



### CIVIC BENCH

**MATERIALS** | Mild Steel Frame, Hardwood Timber or Aluminum Slats, Length 1800 mm Concealed Bolt Down Attachment, Powder Coat or Mill Finish



### DELTA BENCH

**MATERIALS** | Cast Aluminum Construction, Hardwood Timber Slats Length 1800 mm, Bolt Down Attachment, Powder Coat or Mill Finish



### FIESTA BENCH

**MATERIALS** | Cast Aluminum Construction, Hardwood Timber Slats Length 1800 mm, Bolt Down Attachment, Powder Coat Finish





### FORESHORE BENCH

**MATERIALS** | Cast Aluminum Construction, Hardwood Timber Slats  
Length 1800 mm, Bolt Down Attachment, Powder Coat Finish



### FRANKSTON BENCH

**MATERIALS** | Mild Steel Construction, Hot Dipped Galvanized, Hardwood Timber Slats, Length 1800 mm  
Bolt Down or In Ground Attachment, Powder Coat Finish



### FULCRUM BENCH

**MATERIALS** | Mild Steel Construction, Hot Dipped Galvanized  
Hardwood Timber Slats, Length 1800 mm, Bolt Down or In Ground Attachment, Powder Coat Finish



### LYNDARUM BENCH

**MATERIALS** | 304 Grade Stainless Steel Construction, Hardwood Timber Slats  
Length 1800 mm, Also Available With Armrests, Bolt Down or In Ground Attachment





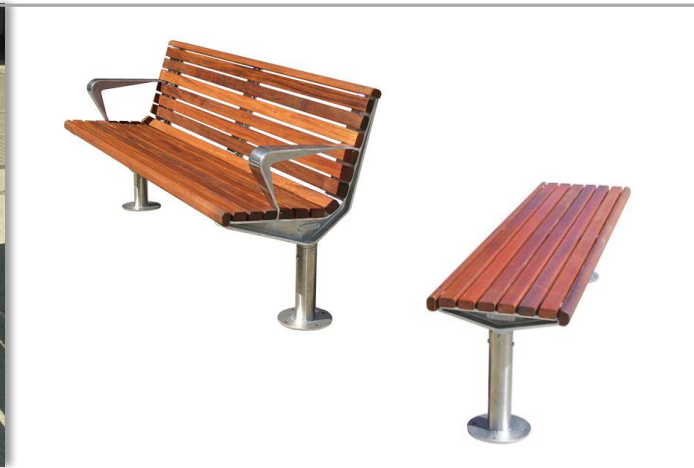
### METRO BENCH

**MATERIALS** | Cast Aluminum Construction, Polished Arm Rests, Hardwood Timber or Aluminum Slats, Length 1800 mm, Concealed Bolt Down Attachment, Powder Coat or Mill Finish



### PARK BENCH

**MATERIALS** | Mild Steel Construction, Hot Dipped Galvanized, Hardwood Timber Slats, Length 1800 mm, Bolt Down Attachments, Powder Coat Finish



### PROMENADE BENCH

**MATERIALS** | Cast Aluminum Construction, Polished Arm Rests, 304 Grade Stainless Steel Legs, Hardwood Timber or Aluminum Slats, Length 1800 mm, Bolt Down or In Ground Attachment, Powder Coat or Mill Finish



### PREMIER BENCH

**MATERIALS** | Cast Aluminum Construction, Hardwood Timber Slats, Length 1800 mm, Bolt Down Attachment, Powder Coat Finish





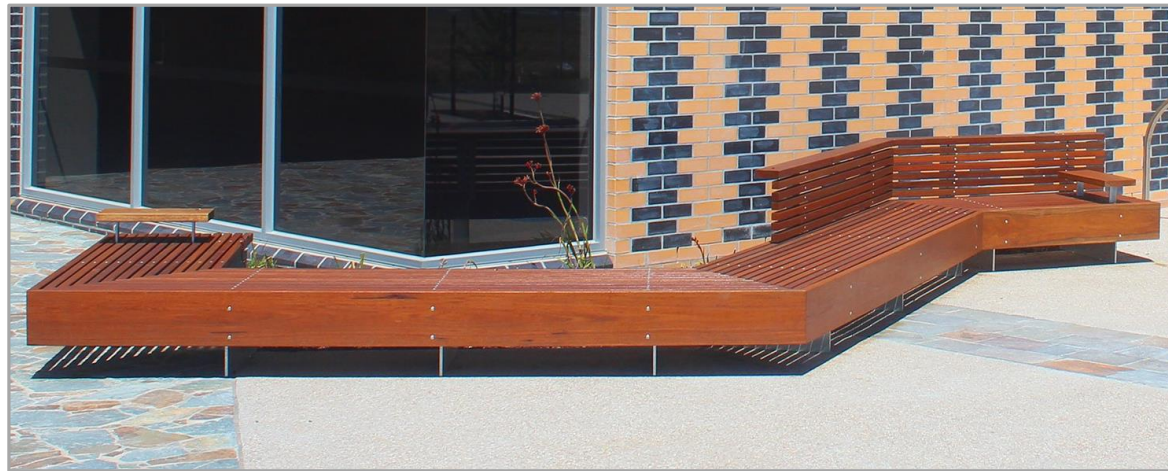
### ROTHERMAN BENCH

MATERIALS | Cast Aluminum Construction, Hardwood Timber Slats, Length 1800 mm  
Bolt Down Attachment, Powder Coat Finish



### WOODGROVE BENCH

MATERIALS | Mild Steel Construction, Hot Dipped Galvanized, Hardwood Timber or Aluminum Slats  
Length 1800 mm, Bolt Down or In Ground Attachment, Powder Coat Finish



### CUSTOMIZED BENCH DESIGNS

MATERIALS | CAST ALUMINUM AND HARDWOOD TIMBER







**AP. 5001**  
DIMENSIONS | 700 x 1700 x 790mm



**AP. 5003**  
DIMENSIONS | 770 x 1630 x 900mm



**AP. 5011**  
DIMENSIONS | 550 x 1620 x 800mm



**AP. 5002**  
DIMENSIONS | 1300 x 1720 x 800mm



**AP. 5004**  
DIMENSIONS | 1440 x 1630 x 900mm



**AP. 5012**  
DIMENSIONS | 450 x 1620 x 640mm

SPECIFICATIONS METAL TYPE | LASER CUTTING WOOD TYPE | 1. CLASS IMPORTED SCOTS PINE METAL PAINT | ELECTROSTATIC PAINT PAINTING METHOD | VACUUM IMPREGNATION



**AP. 5006**  
DIMENSIONS | 700 x 1560 x 780mm



**AP. 5018**  
DIMENSIONS | 540 x 1700 x 500mm



**AP. 5014**  
DIMENSIONS | 700 x 1800 x 800mm



**AP. 5007**  
DIMENSIONS | 640 x 1490 x 830mm



**AP. 5021**  
DIMENSIONS | 600 x 1100 x 750mm



**AP. 5015**  
DIMENSIONS | 550 x 1450 x 800mm

SPECIFICATIONS METAL TYPE | LASER CUTTING

WOOD TYPE | 1. CLASS IMPORTED SCOTS PINE / VERZALIT

METAL PAINT | ELECTROSTATIC PAINT PAINTING METHOD | VACUUM IMPREGNATION

WOODEN BENCHES







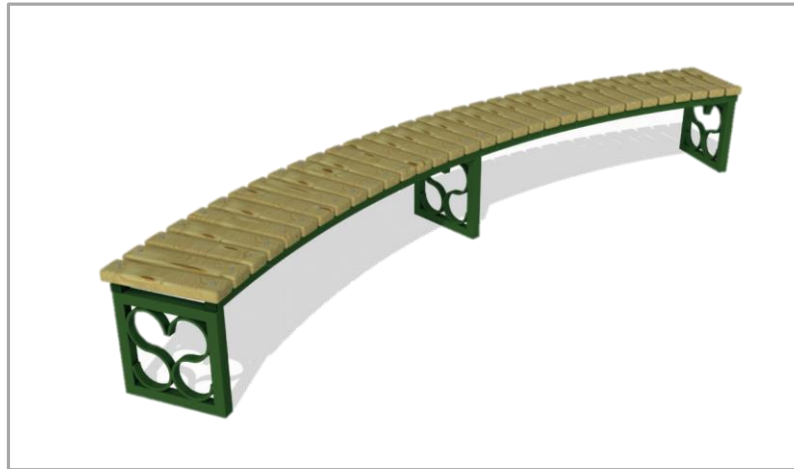
**AP. 5023**  
DIMENSIONS | 550 x 3450 x 450mm



**AP. 5009**  
DIMENSIONS | 460 x 1610 x 460mm



**AP. 5027**  
DIMENSIONS | 500 x 1630 x 450mm



**AP. 5022**  
DIMENSIONS | 550 x 3450 x 450mm



**AP. 5029**  
DIMENSIONS | 550 x 1590 x 480mm



**AP. 5026**  
DIMENSIONS | 450 x 1630 x 500mm

SPECIFICATIONS METAL TYPE | STAINLESS STEEL LASER CUTTING WOOD TYPE | IMPORTED SAPELE WOOD METAL PAINT | POLISHING 304 SS PAINTING METHOD | WOOD PROTECTIVE PAINT



### BENCH SIENA / PSIO1

DIMENSIONS | 1920mm x 570mm 420/800cm SEAT HEIGHT | 420mm

SPECIFICATIONS | Bench consisting of tubular frame in hot-galvanized and painted steel, seat and backrest with 8 beveled and rounded boards, thickness 43 mm, painted in pale walnut, drilled with holes for anchoring to ground.



### BENCH COMFORT / PCF195

DIMENSIONS | 1940 x 570 x 400/790mm

SPECIFICATIONS | Seat/backrest with six beveled and rounded boards, thickness 43 mm.



### BENCH VENEZIA / PVE01

DIMENSIONS | 1870 x 620 x 800mm





### BENCH PICADILLY / PCY150

DIMENSIONS | 1500 x 600 x 920mm

SPECIFICATIONS | Tubular frame in hot-galvanized / hot-galvanized and painted steel, seat/backrest with six beveled and rounded boards, thickness 43 mm, drilled with holes for anchoring to ground.



### BENCH VERONA / PVR01

DIMENSIONS | 1940 x 570 x 800mm

SPECIFICATIONS | Tubular frame in hot-galvanized / hot-galvanized and painted steel, seat/backrest with six beveled and rounded boards, thickness 43 mm, drilled with holes for anchoring to ground.



### BENCH RIVA / PRI195

DIMENSIONS | 1500 x 1500 x 640mm

SPECIFICATIONS | Tubular frame in hot-galvanized steel, seat/backrest with seven beveled and rounded boards, thickness 43 mm, prearranged only for cementing to the ground.







### BENCH ROMA / PRM01P DIMENSIONS | 1500 x 1500 x 640mm

**SPECIFICATIONS |** Seat/backrest with eleven beveled and rounded boards, thickness 43 mm, painted in pale walnut, three stays in hot-galvanized and painted steel, drilled with holes for anchoring to ground.



### BENCH TORINO / PBGL175

**DIMENSIONS |** 1750/194 x 570 x 790mm

**SPECIFICATIONS |** Frame in steel "U" profiles, hot-galvanized / hot-galvanized and painted, seat/backrest with five rounded and stondate boards, thickness 33 or 43 mm.







### **PARK BENCH LP014.2**

Length: 1634 mm Width: 410 mm Height: 400 mm



### **PARK BENCH LP014**

Length: 1200 mm Width: 410 mm Height: 400 mm



### **PARK BENCH LP014.1**

Length: 1197 mm Width: 410 mm Height: 400 mm



### **PARK BENCH LP013.2**

Length: 1836 mm Width: 507 mm Height: 400 mm



### **PARK BENCH LP013.1**

Length: 1836 mm Width: 655 mm Height: 786 mm



### **DOUBLE LINE BENCH LP006.1**

Length: 1710 mm Width: 415 mm Height: 406 mm

**MATERIALS | GALVANIZED STEEL, POWER COATED AND HARDWOOD TIMBER**

**WOODEN BENCHES**





### **PARK BENCH LP015**

Length: 1520 mm Width: 480 mm Height: 399 mm



### **PARK BENCH LP015.1**

Length: 1520 mm Width: 480 mm Height: 400 mm



### **PARK BENCH LP016**

Length: 1474 mm Width: 475 mm Height: 600 mm



### **PARK BENCH LP017**

Length: 1474 mm Width: 450 mm Height: 400 mm



### **PARK BENCH LP018**

Length: 1800 mm Width: 572 mm Height: 775 mm



### **PARK BENCH LP019**

Length: 1800 mm Width: 450 mm Height: 475 mm

**MATERIALS | GALVANIZED STEEL, POWER COATED AND HARDWOOD TIMBER**





### **PARK BENCH LP063**

Length: 1760 mm Width: 587 mm Height: 690 mm



### **PARK BENCH LP064**

Length: 1710 mm Width: 524 mm Height: 715 mm



### **BENCH LP065**

Length: 1604 mm Width: 704 mm Height: 751 mm



### **DOUBLE LINE PARK BENCH LP006**

Length: 1710 mm Width: 503 mm Height: 791 mm



### **PARK BENCH LP013**

Length: 1836 mm Width: 655 mm Height: 786 mm



### **PLASMA BENCH WITH BACKSEAT LP011**

Length: 1708 mm Width: 668 mm Height: 866 mm

**MATERIALS | GALVANIZED STEEL, POWER COATED AND HARDWOOD TIMBER**

**WOODEN BENCHES**





**RADIUS PARK BENCH LP003**  
Length: 1680 mm Width: 560 mm Height: 769 mm



**WAVE PARK BENCH LP002**  
Length: 1710 mm Width: 566 mm Height: 845 mm



**CURVED BENCH LP012 (section)**  
Length: 1145 mm Width: 400 mm Height: 400 mm



**DOUBLE LINE TABLE LPS006**  
Length: 1710 mm Width: 636 mm Height: 774 mm



**PLASMA TABLE LPS011**  
Length: 1708 mm Width: 640 mm Height: 700 mm



**RADIUS TABLE LPS003**  
Length: 1680 mm Width: 700 mm Height: 774 mm

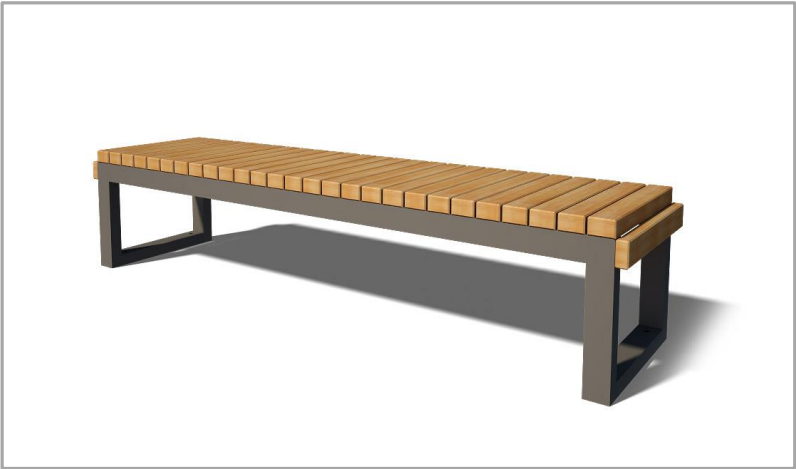
MATERIALS | GALVANIZED STEEL, POWER COATED AND HARDWOOD TIMBER





**WAVE TABLE LPS002**

Length: 1758 mm Width: 644 mm Height: 700 mm



**PARK BENCH LP016.1**

Length: 1805 mm Width: 450 mm Height: 400 mm



**LP035.1-1.7 Bench**

Length: 1750 mm Width: 693 mm Height: 514 mm



**LP032 PARK BENCH**

Length: 1820 mm Width: 930 mm Height: 1230 mm



**LP034 ROUND BENCH**

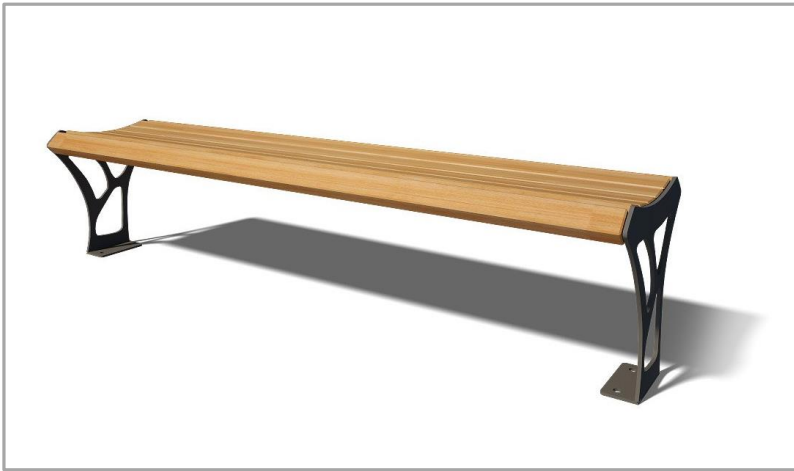
Length: 3000 mm Width: 3000 mm Height: 860 mm



**LP035-1.7 BENCH**

Length: 1750 mm Width: 693 mm Height: 763 mm

MATERIALS | GALVANIZED STEEL, POWER COATED AND HARDWOOD TIMBER



### **PARK BENCH LP030**

Length: 1800 mm Width: 458 mm Height: 411 mm



### **PARK BENCH LP031**

Length: 1800 mm Width: 458 mm Height: 411 mm



### **BENCH WITH PLYWOOD SEAT S741**

Length: 1200 mm Width: 360 mm Height: 450 mm



### **PLASMA BENCH LP011.1**

Length: 1708 mm Width: 450 mm Height: 473 mm



### **RADIUS BENCH LP003.1**

Length: 1680 mm Width: 473 mm Height: 435 mm



### **WAVE BENCH LP002.1**

Length: 1710 mm Width: 421 mm Height: 400 mm

**MATERIALS | GALVANIZED STEEL, POWER COATED AND HARDWOOD TIMBER**

**WOODEN BENCHES**







### **PARK BENCH LP061**

Length: 1760 mm Width: 589 mm Height: 809 mm



### **BENCH LP062**

Length: 1620 mm Width: 539 mm Height: 690 mm



### **BENCH S722.1**

Length: 1620 mm Width: 770 mm Height: 820 mm



### **LP075 PARK BENCH**

Length: 1800 mm Width: 519 mm Height: 775 mm

**MATERIALS | GALVANIZED STEEL, POWER COATED AND HARDWOOD TIMBER**



### **BENCH PARK "WAVE" LP002P**

Length: 1710 mm Width: 566 mm Height: 845 mm



### **BENCH S708.1**

Length: 1535 mm Width: 668 mm Height: 953 mm

WOODEN BENCHES |





**AP. 5159**  
 DIMENSIONS | 2080 x 2400 x 830mm



**AP. 5160**  
 DIMENSIONS | 2900 x 2900 x 830mm



**AP. 5161**  
 DIMENSIONS | 1500 x 1500 x 640mm

SPECIFICATIONS: METAL TYPE | BOX PROFILE WOOD TYPE | WOOD PLASTIC COMPOSITE METAL PAINT | ELECTROSTATIC PAINT





**AP. 5030**

DIMENSIONS | 500 x 3080 x 800mm



**AP. 5031**

DIMENSIONS | 840 x 2520 x 770mm



**AP. 5032**

DIMENSIONS | 430 x 1610 x 470mm

SPECIFICATIONS METAL TYPE | LAZER CUTTING WOOD TYPE | 1. CLASS IMPORTED SCOTS PINE METAL PAINT | ELECTROSTATIC PAINT PAINTING METHOD | WOOD PROTECTIVE PAINT

WOODEN BENCHES





**AP. 5050**  
DIMENSIONS | 700 x 1700 x 790mm



**AP. 5052**  
DIMENSIONS | 770 x 1630 x 900mm



**AP. 5054**  
DIMENSIONS | 750 x 1500 x 700mm



**AP. 5051**  
DIMENSIONS | 1300 x 1720 x 800mm



**AP. 5053**  
DIMENSIONS | 1440 x 1630 x 900mm



**AP. 5055**  
DIMENSIONS | 1460 x 1500 x 700mm

SPECIFICATIONS METAL TYPE | STAINLESS STEEL LASER CUTTING WOOD TYPE | IMPORTED SAPELE WOOD METAL PAINT | POLISHING 304 SS PAINTING METHOD | WOOD PROTECTIVE PAINT





**AP. 5057**  
 DIMENSIONS | 600 x 1500 x 860mm



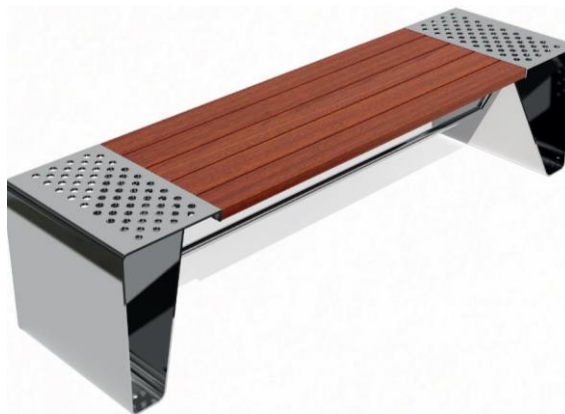
**AP. 5070**  
 DIMENSIONS | 470 x 1560 x 430mm



**AP. 5078**  
 DIMENSIONS | 1600 x 1600 x 600mm



**AP. 5058**  
 DIMENSIONS | 460 x 1610 x 460mm



**AP. 5071**  
 DIMENSIONS | 470 x 1810 x 440mm



**AP. 5077**  
 DIMENSIONS | 2830 x 680 x 830mm

**SPECIFICATIONS** METAL TYPE | STAINLESS STEEL LASER CUTTING WOOD TYPE | IMPORTED SAPELE WOOD METAL PAINT | POLISHING 304 SS PAINTING METHOD | WOOD PROTECTIVE PAINT



**AP. 5062**  
DIMENSIONS | 770 x 1630 x 900mm



**AP. 5064**  
DIMENSIONS | 600 x 1500 x 860mm



**AP. 5069**  
DIMENSIONS | 550 x 1800 x 720mm



**AP. 5063**  
DIMENSIONS | 500 x 1350 x 450mm



**AP. 5065**  
DIMENSIONS | 600 x 1500 x 860mm



**AP. 5068**  
DIMENSIONS | 500 x 1820 x 660mm

**SPECIFICATIONS** METAL TYPE | STAINLESS STEEL LASER CUTTING WOOD TYPE | IMPORTED SAPELE WOOD METAL PAINT | POLISHING 304 SS PAINTING METHOD | WOOD PROTECTIVE PAINT

WOODEN BENCHES







**AP. 5152**  
DIMENSIONS | 680 x 1500 x 750mm



**AP. 5154**  
DIMENSIONS | 600 x 1500 x 860mm



**AP. 5151**  
DIMENSIONS | 770 x 1630 x 900mm



**AP. 5155**  
DIMENSIONS | 460 x 1610 x 460mm

SPECIFICATIONS METAL TYPE | LASER CUTTING WOOD TYPE | WOOD PLASTIC COMPOSITE METAL PAINT | ELECTROSTATIC PAINT



## | CONCRETE BENCHES

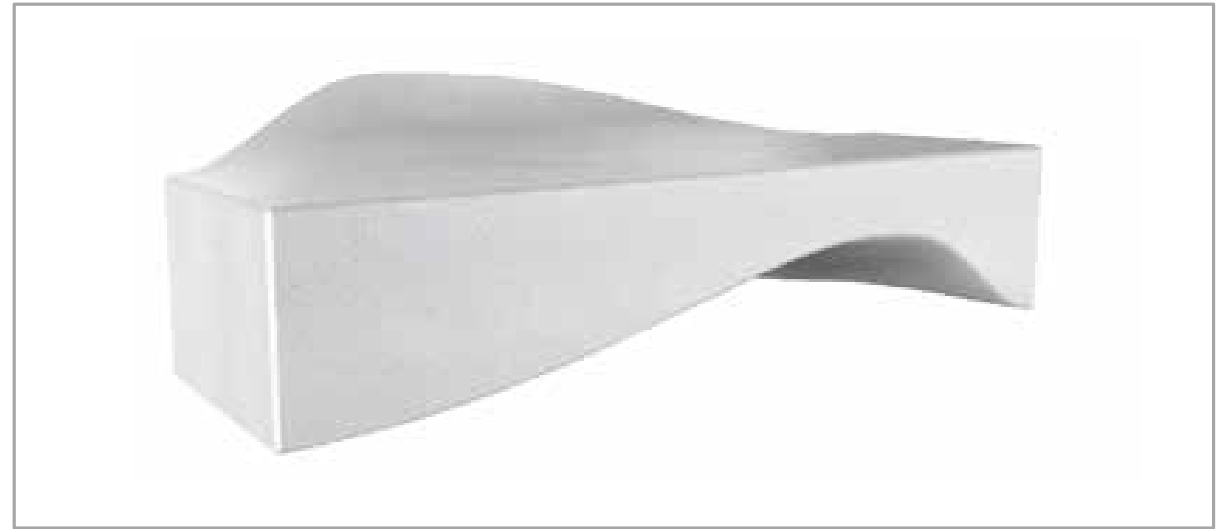




## SOPHIE WITHOUT BACKREST

**SPECIFICATIONS** | Concrete made of concrete reinforced with galvanized knurled steel, the mix consists of cement, graded marble aggregate, synthetic staples, fluidifying additives to reduce the water/cement ratio, cast in formwork vibrated at high frequency. Edges are engraved.





**CLOUD**

**SPECIFICATIONS** | Concrete Bench without backrest. On request can be supplied with seat in wood.

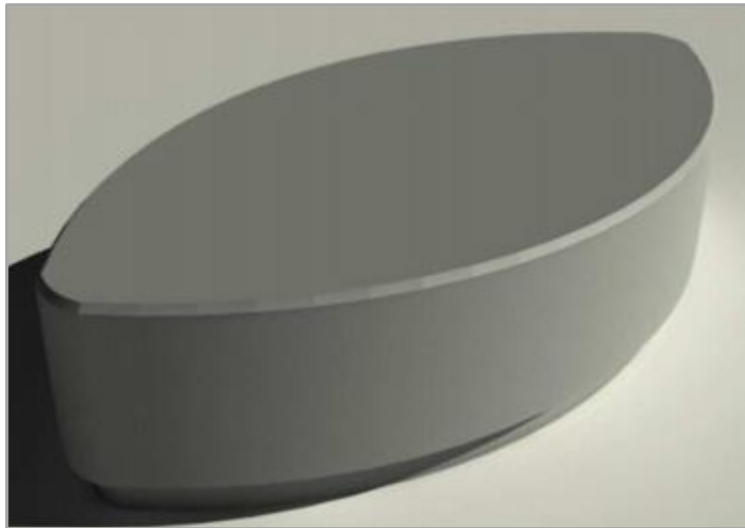


**WAVE BENCH (TOP) / BEACH BENCH (BOTTOM)**



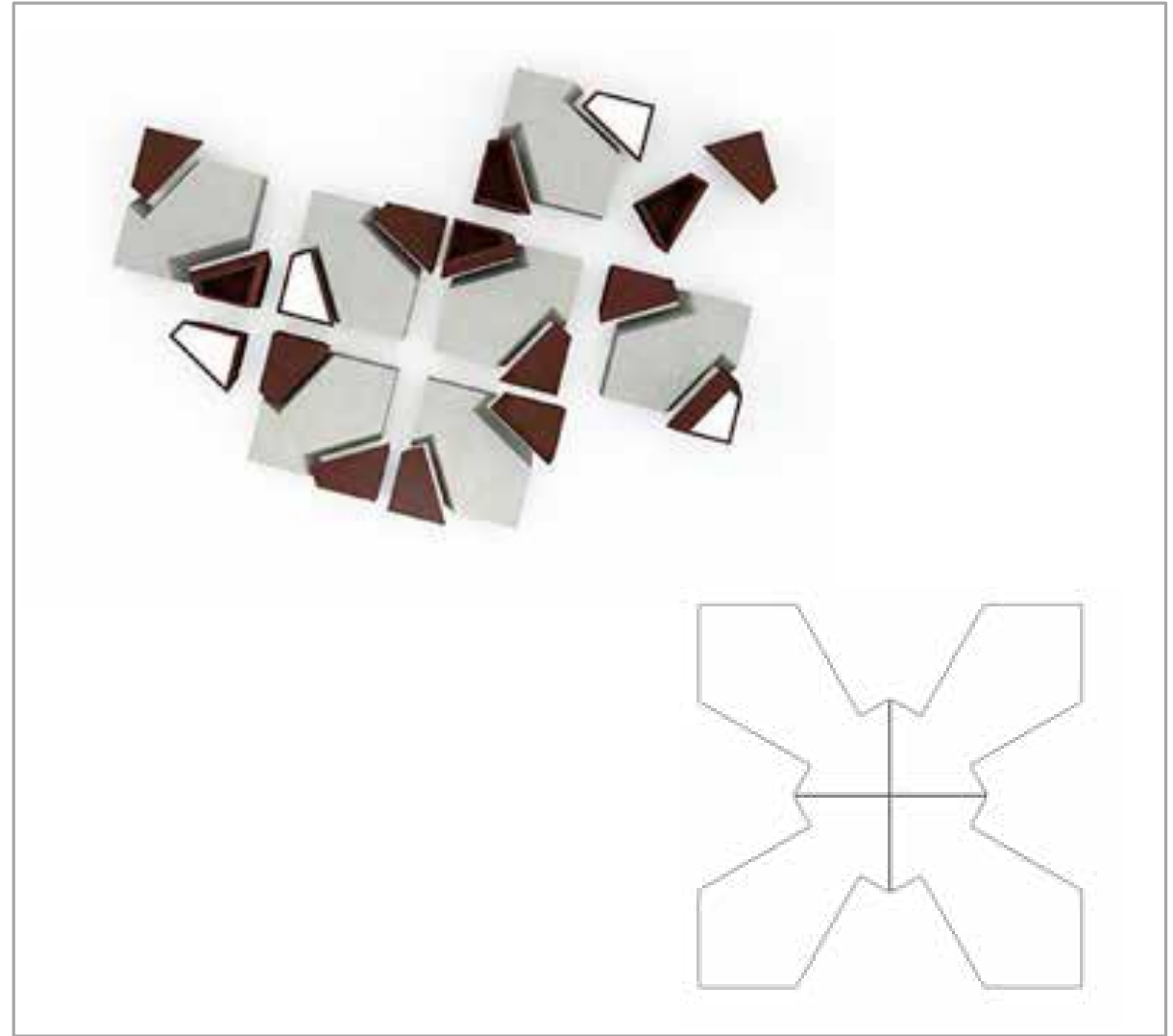


**OPEN BENCH**



**FREE STANDING BENCH OBELISK**

**SPECIFICATIONS** | Concrete Bench without backrest. On request can be supplied with seat in wood.



**STELLA CLS**

**MATERIAL** | Concrete bench without backrest Dim, 140x140x45h



**OASI (TOP) / ABIGAILLE (BOTTOM)**

**RIVA BENCH (TOP) / TEATRO BENCH (BOTTOM)**

**SPECIFICATIONS** | Concrete Bench without backrest. **(Oasi)** Concrete bench with backrest. Available in straight or curved version.  
**(Teatro)** Concrete single-block bench workable with or without backrest. Positioned one next to the other they will create a circle.





**VOLO BENCH** with backrest (TOP) / **COLO PIANA BENCH** without backrest (BOTTOM)

**META BENCH** (TOP) / **SIENA BENCH** (BOTTOM)

**SPECIFICATIONS** | (Volo) Concrete bench with backrest. Dim. 190x72x86 h cm (Colo Piana) Concrete bench without backrest. Dim. 190x84x48 h cm  
(Meta) Concrete bench with or without backrest. Dim. 220/200x50x76 h cm Dim. 220/200x50x45 h cm (Siena) Concrete single-block bench. Dim. 220x50x50 h cm





# | THEMED BENCHES





## FENICIA BENCH

**SPECIFICATIONS** | A S235JR steel seat consisting of 6 40x10mm modular steel profiles. These are shaped to converge at the bottom and are connected to a hinged swivel support, which can be fixed to the ground. The backrest is reinforced and aligned by a Ø 6mm. horizontal, stainless steel rod.



## MOIRE BENCH

**SPECIFICATIONS** | An AISI 304 stainless steel bench consisting of 5mm. laser-cut supports and Ø 10mm. rods for the seat and backrest. This model is available in straight and curved versions; both internal and external curved elements are available. The bench is set on tubular stainless steel supports.





## EVIAN BENCH

**SPECIFICATIONS** | A bench manufactured from S235JR steel, consisting of laser-cut supports, 7 40x40mm. tubular elements for the seat, and 5 40x10 tubular elements for the backrest. Also available with concrete stands.



## DECA BENCH

**SPECIFICATIONS** | A relaxing chaise longue designed for urban parks and gardens. The S235JR structure consists of 6 Ø 30mm tubular elements for the backrest, intermeshed with 7 similar elements for the elegant seat..





## ETERE BENCH

**SPECIFICATIONS** | This bench is available in AISI 304 stainless steel or S235JR steel. The supporting structure is press-formed 40x10mm. steel plate. The backrest and seat can be made of a variety: 20x20mm. stainless steel or S235JR rods, or mahogany slats. these versions are also available without a backrest..



## SITTING AROUND BENCH

**SPECIFICATIONS** | A bench with a specially shaped, stainless steel AISI 304 supporting structure. The seat itself is made up of 46 mahogany slats





## MAREA BENCH

**SPECIFICATIONS** | The AISI 304 stainless steel structure is shaped out of 50x20mm. strips. The seat and backrest, made of mahogany slats, are proposed in three different inclinations. Also available with case at the base containing n°2 solar powered LEDs.



## ARCADIA BENCH

**SPECIFICATIONS** | The structure of this bench is made of S235JR steel. The shape of the backrest and the footrest provide extra comfort and back support when sitting on the backrest. The supports are made of C-shaped, 4mm. thick 50x25mm. tubes. Those used for the seat and backrest measure 25x25mm.





## NASTRO BENCH

**SPECIFICATIONS** | This ribbon wraps up the air of our city in a comfortable package. Nastro's light, well-modelled, natural shape plays on its robustness, and radically challenges the predictable perception of street furniture as being heavy. Structure made of 5mm thick S235JR steel plate cut with a water-jet



## GE BENCH

**SPECIFICATIONS** | A restful and comfortable stainless steel AISI 304 structure consisting of a  $\varnothing$  48mm. tubular frame and a backrest made of  $\varnothing$  8mm. rods. The rods are unevenly spaced and get closer together near the base.





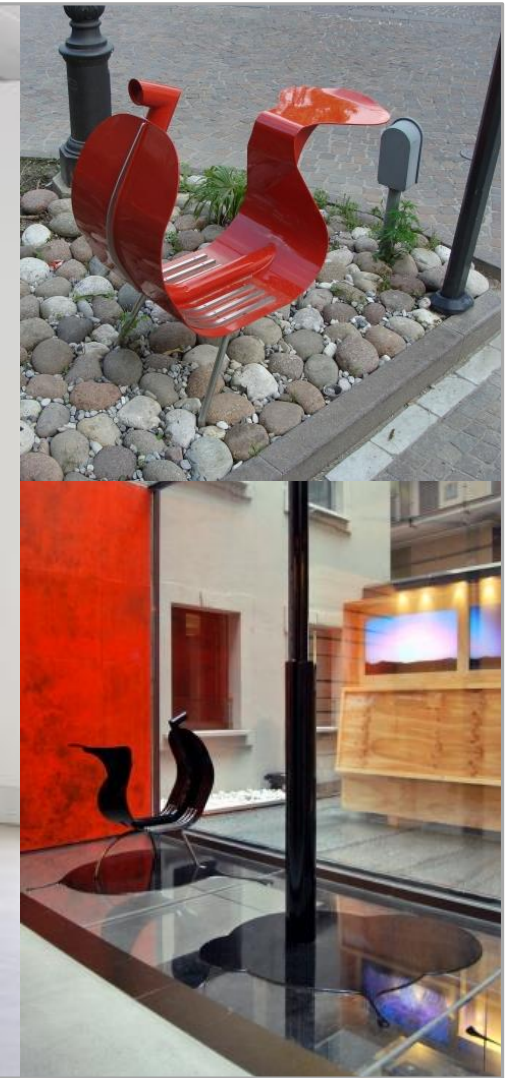
## SHAULA BENCH

**SPECIFICATIONS** | There are two versions: one long and articulated, the other short and compact. The S235JR steel structure consists of a moulded tubular frame welded to 40mm x10mm modular steel strips. There is also a version with slats made of various types of wood .



## VESPINO BENCH

**SPECIFICATIONS** | This seat uses the most classic of Italian designs to take a new look at the “leaning on the scooter” pose. Made of S235JR steel plate and curved/shaped tubing.







## LUNA BENCH

**SPECIFICATIONS** | A seat which is strikingly simple and compact, all the more so at night thanks to its internal lighting system. The external structure is made of bored AISI 304 steel. The bench is fixed to the ground in such a way as to the electrical system accessible by simply removing the main structure.



## TALK BENCH

**SPECIFICATIONS** | A seat designed for young people and the innumerable ways they like to sit when they meet and talk. Made of a single S235JR steel tube, which curves sinuously creating three different levels.





## LETTERA BENCH

**SPECIFICATIONS** | The conceptual simplicity of this bench, a folded sheet, is a response to requests for a flexible product which can be personalized with texts, logos, and advertising images. The object itself is alluring, playing on a sort of interference between the seated user and the passerby. The latter would like to move the seated person off the bench to get a better look at what is on the backrest. Made of S235JR steel plate or AISI 304 stainless steel plate.



## OTÉ BENCH

**SPECIFICATIONS** | Oté bench was designed in homage to the sculptures of the Spanish artist Jorge Oteiza. Made of coated steel sheet, this 3-seater bench allows many ways to sit on it, with or without backseat. The upper part of the backseat is folded in order to create a shelf where you can lean something on or just lean yourself while standing.





**MULTI-COLORED SEATS**

**PREMIERE SEAT SANDSTONE**

**MULTI-COLORED BENCH**

**SPECIFICATIONS** | Maintenance free, Ready assembled, Supplied with ground fixing bolts for hard surfaces, Environmentally friendly, Made from recyclable plastic, Hygienic & easy to clean, Vandal resistant, UV stable





**MULTI-COLORED SEATS**

**PREMIERE SEAT SANDSTONE**

**MULTI-COLORED BENCH**

**SPECIFICATIONS** | Maintenance free, Ready assembled, Ground fixing bolts for hard surfaces, Environmentally friendly, Made from recyclable plastic, Hygienic & easy to clean, Vandal resistant, UV stable, Struts are made from 100% recyclable material & are available in black only





**STAR BENCH MULTI-COLORED**



**MODULAR SEATING**



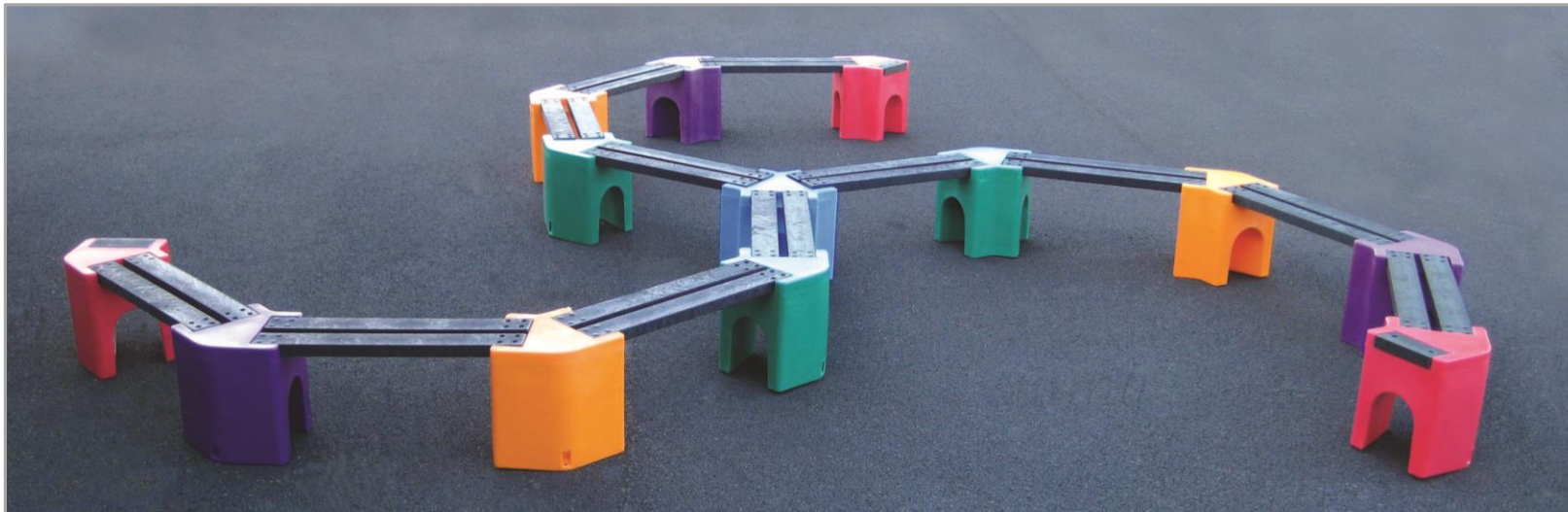
**MODULAR SEATING**

**SPECIFICATIONS** | Extremely versatile combinations of seating arrangements, Maintenance free - no need for varnish or paint, Ground fixing bolts for hard surfaces, Hygienic & easy to clean, Environmentally friendly, Made from recyclable plastic, Vandal resistant, Struts are supplied in black only and are 100% recycled material

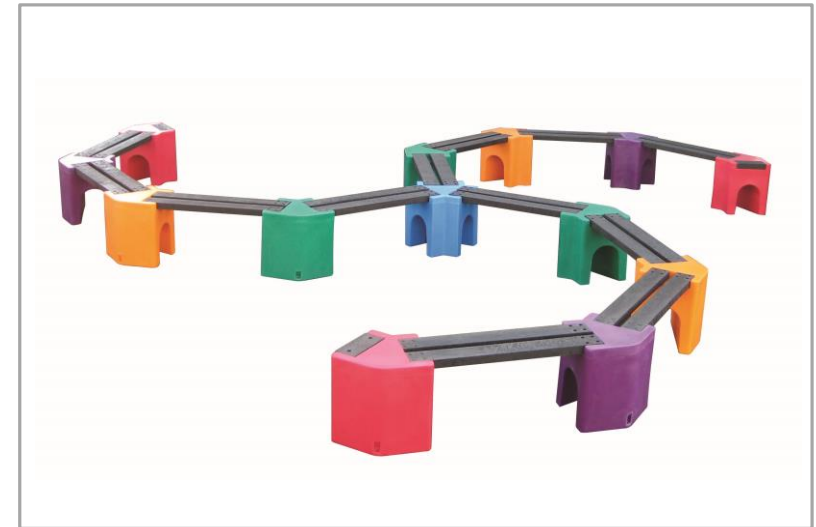




**ZIGZAG BENCH**



**SPIRAL BENCH**

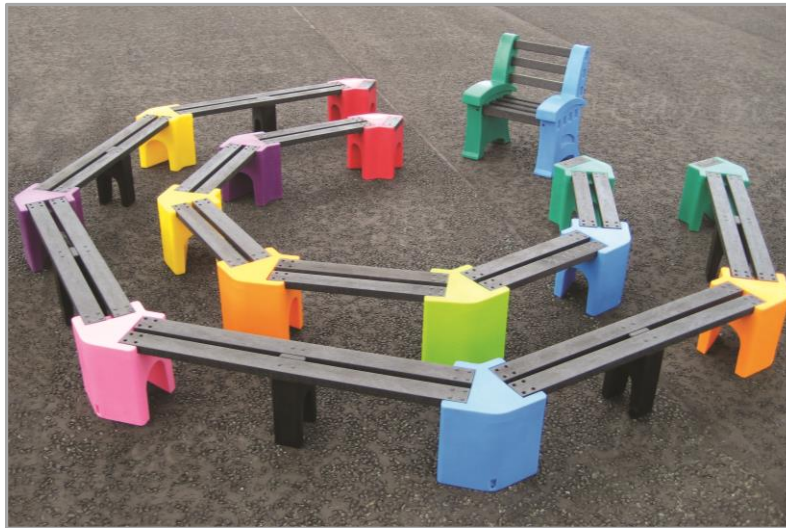


**SPECIFICATIONS** | Maintenance free - no need for varnish or paint, Supplied with ground fixing bolts for hard surfaces, Environmentally friendly, Made from recyclable plastic, Hygienic & easy to clean, Vandal resistant - made from durable polyethylene, UV stable, Struts are supplied in black only and are 100% recycled material





**LEARNING CURVE AND ARENA**



**LEARNING CURVE & TEACHER'S CHAIR**



**SPECIFICATIONS** | UV stable, Vandal resistant, Maintenance free, Hygienic & easy to clean, Supplied with ground fixing bolts for hard surfaces, Environmentally friendly, Made from recyclable plastic





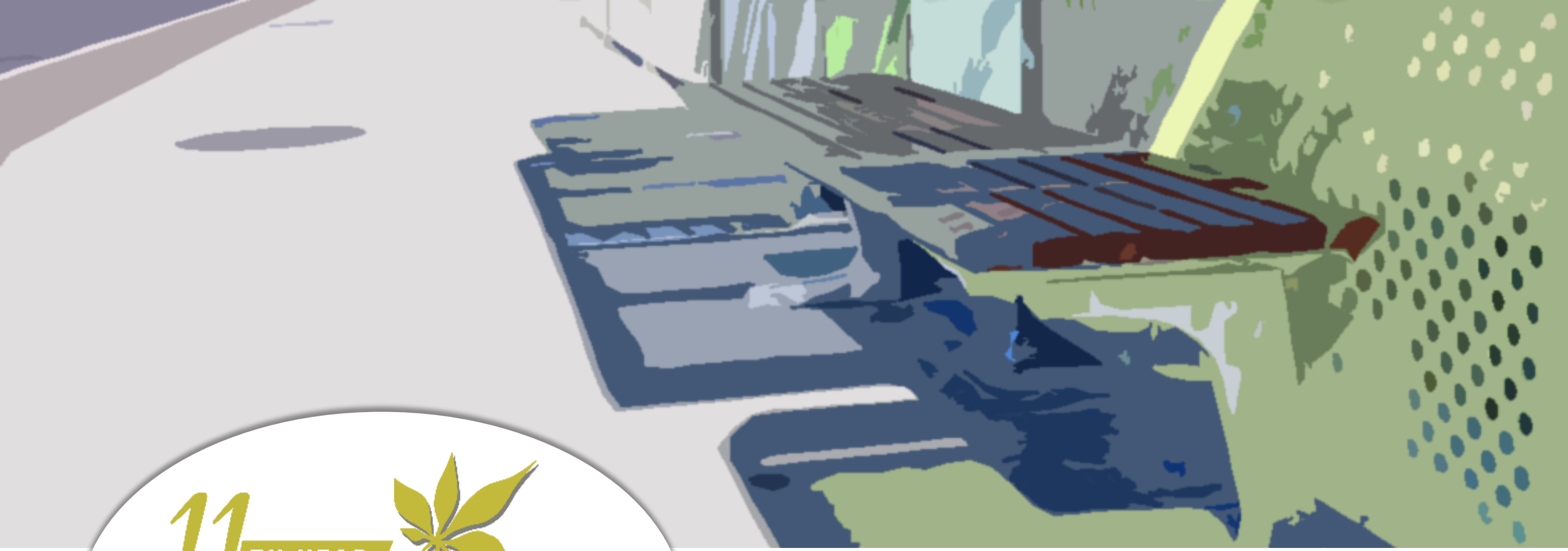
## BENCH HAVANA / PHA01

DIMENSIONS | 2000 x 640 x 830mm SPECIFICATIONS | In polyethylene, made of a single piece by rotational moulding, recyclable steel core.

THEMED BENCHES







# BENCHES Street Furniture

**MODERN GARDENS FOR GARDENS EQUIPMENTS TRADING LLC**

PO Box 128619 Abu Dhabi UAE | Tel +971 2 650 8039 | Fax +971 2 673 5995

Email [moderngardens@gmail.com](mailto:moderngardens@gmail.com) | [marketing.moderngardens@gmail.com](mailto:marketing.moderngardens@gmail.com) | Website [moderngardensuae.com](http://moderngardensuae.com)